

Easy to assemble cardboard kit, pre-cut for fast construction.
With 2 precision-made acrylic lenses for 6x magnification

© K. Hünig · SunWatch Verlag Neustadt / Germany
Order No 253.KGT-E · ISBN 3-935-364-54-7

Instructions see overleaf

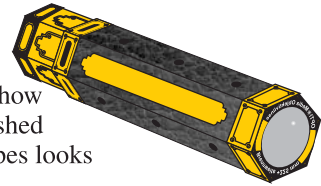


D Glue the flaps of the large lens holder here

C Glue this flap to the back of the opposite side to produce a hexagonal tube **C**

Astro Didaktik
Hands-On Science Series
made in Germany

This is how the finished telescopes looks



H Glue the flaps of the small lens holder here

H Glue this flap to the back of the opposite side to produce a hexagonal tube **H**

FOCUSING THE TELESCOPE:
Insert the smaller tube into the bigger one, diaphragm first.
Hold the eyepiece (the smaller lens) before your eye and push the bigger tube back and forth until you see a sharp image.

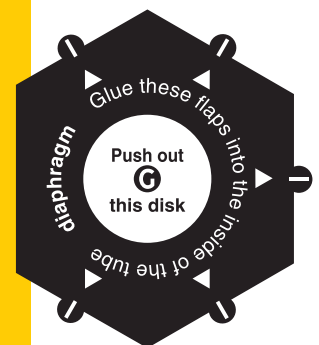
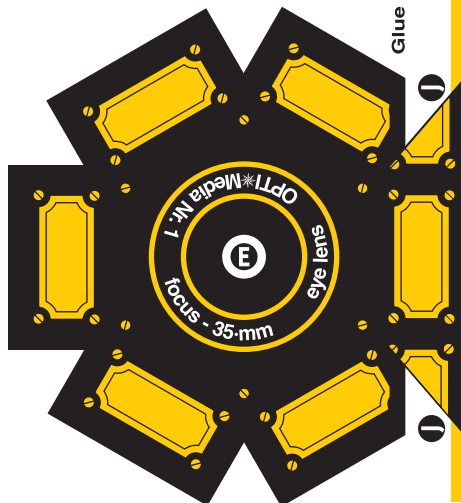
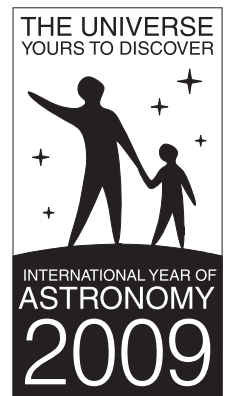
In 1609, Galileo Galilei, professor of physics in Padua / Italy, heard about the Dutch invention of a magnifying tube with lenses. He discovered by himself the form and arrangement of the lenses, built his first telescope, with a magnification like this one, and then many more and better ones.

He was the first scientist to direct his telescope at the stars, making great discoveries: There are craters on the Moon! Venus can have a crescent shape! And above all: There are moons around Jupiter! This was the beginning of modern astronomy, which changed our way to see the world.

**Never look into the sun with your telescope!
Your eyesight can get severely damaged.**

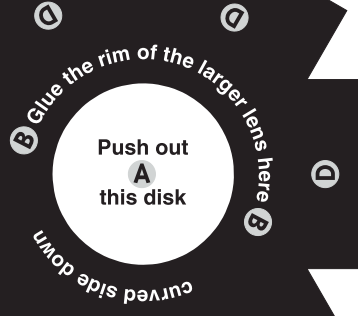
Galilei's Little Telescope · SunWatch Verlag Neustadt / Germany
© K. Hünig · Order No. 253.KGT-E · ISBN 3-935-364-54-7
Astro Didaktik *www.astro-didaktik.ch· Hands On Science Series
We'll be pleased to send you our free catalogue.

This telescope is the property of Built in



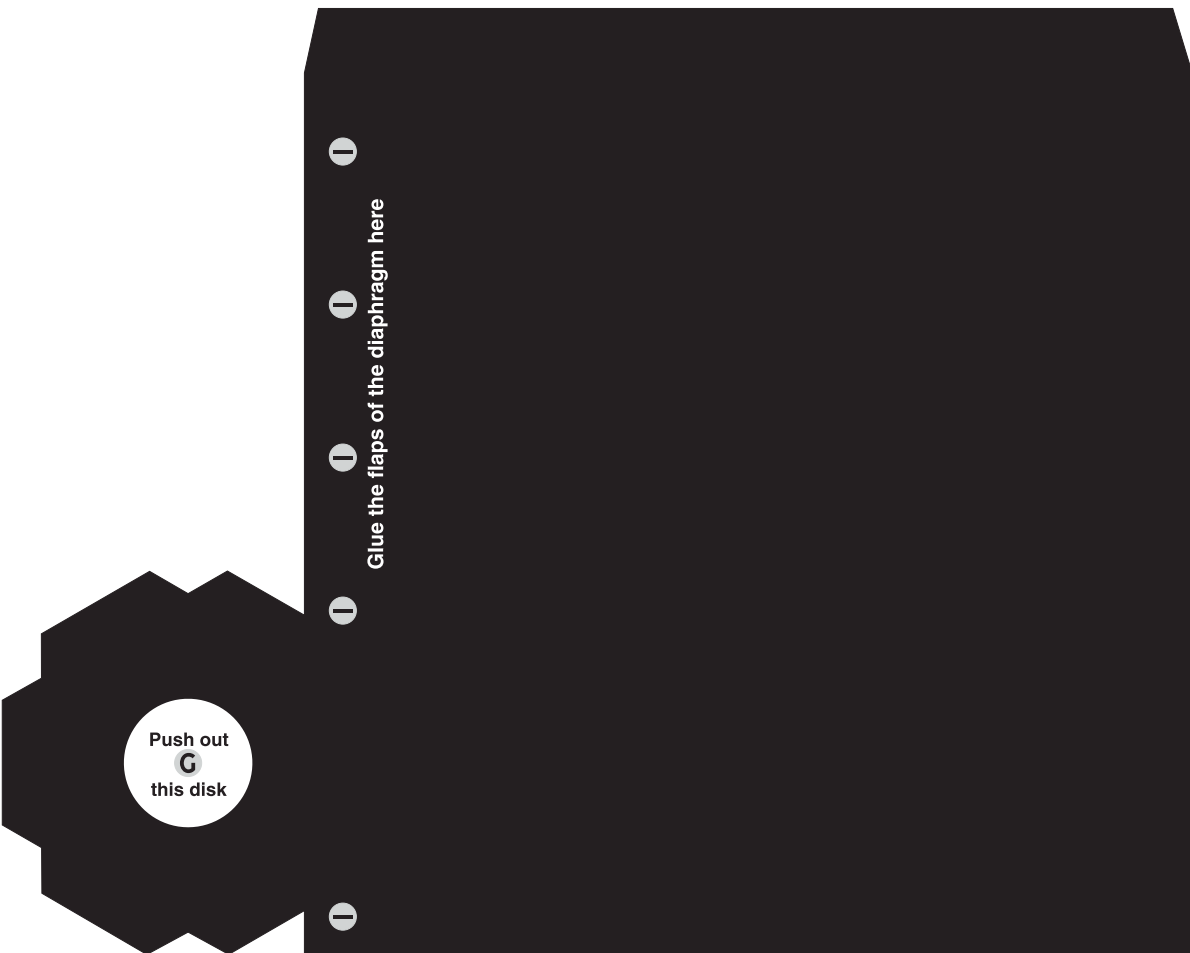
C Glue the flap which is on the opposite side right here

C



Assembly Instructions:

- * Remove the two parts carefully from the cardboard plate.
 - * Fold all grooved lines in the cardboard back, i.e. away from you, in order to form edges.
 - * The gold print will be on the outside when the telescope is finished.
 - * Follow the steps from A to J in alphabetical order.
 - * The parts which must be glued on each other are marked by identical letters.
 - * Use a solvent-containing all-purpose glue to make sure the lenses hold fast.
 - * Let the glue dry well before going on to the next step.
- When the last step is completed, you have built yourself a real working telescope. Congratulations!**
Important: Never look into the sun with your telescope. Your eye can get severely damaged.



Glue the flaps of the diaphragm here

I

I

I

I

I

H

Glue the flap which is on the opposite side right here

H